

COMBAT-MISSION

A component of the eX-MISSION® Software Suite

Getting Started

How to Contact eX-Mission

USA:
Optimation Inc.
201 Finney Drive, SW
Huntsville,
AL 35824
USA

Tel: +1 877 883 3050
www.ex-mission.com

Europe & Asia Pacific:
Nematron Europe Ltd.
1 The Briars
Waterberry Drive
Waterlooville, PO7 7YH
United Kingdom

Tel: +44 239 226 8080
www.ex-mission.net

Copyright Notice

© COPYRIGHT 2005

The software described in this document is furnished under a license agreement. The software may be used or copied only under the terms of the license agreement. No part of this manual may be reproduced in any form without prior written consent.

eX-MISSION is a registered trademark.

Document Revision History

Revision	Date	Comments
1.0	05/02/03	Minor Update: configuration instructions.
0.3	03/12/19	Updated screenshots and reformatted
0.2	03/10/10	Added Screenshots
0.1	03/09/23	First version

Table of contents

Table of contents	3
1 Introduction	5
1.1 Domain Configuration	5
1.2 BRAVE Monitoring	5
2 Features.....	7
2.1 Domain Configuration	7
2.1.1 Adding and Removing Clients	7
2.1.2 Modifying a Publish List.....	7
2.1.3 Modifying a Subscription List.....	8
2.1.4 Modifying a Receive List	8
2.1.5 Committing Changes.....	8
2.2 Monitoring.....	9
2.2.1 Adding a Client to the Report List	9
2.2.2 Removing a Client from the Report List.....	9
3 Configuration.....	11

Notes:

I Introduction

Within the eX-MISSION® applications, the BRAVE application provides a CAMX Message Broking framework. It is of vital importance that an administrator be able to configure the domain characteristics, and monitor the proper behaviour of the server.

I.1 Domain Configuration

An IPC CAMX Domain is defined by a set of entities and their message publishing capabilities and subscription interests. COMBAT-MISSION allows you to dynamically configure the Domain Configuration, adding and removing entities from the domain, and editing publishing and subscription message lists.

I.2 BRAVE Monitoring

A BRAVE server has limited resources. For that reason, it is important to monitor real-time statistics from the Domain. COMBAT retrieves information from the server and allows close following of critical live-stat parameters.

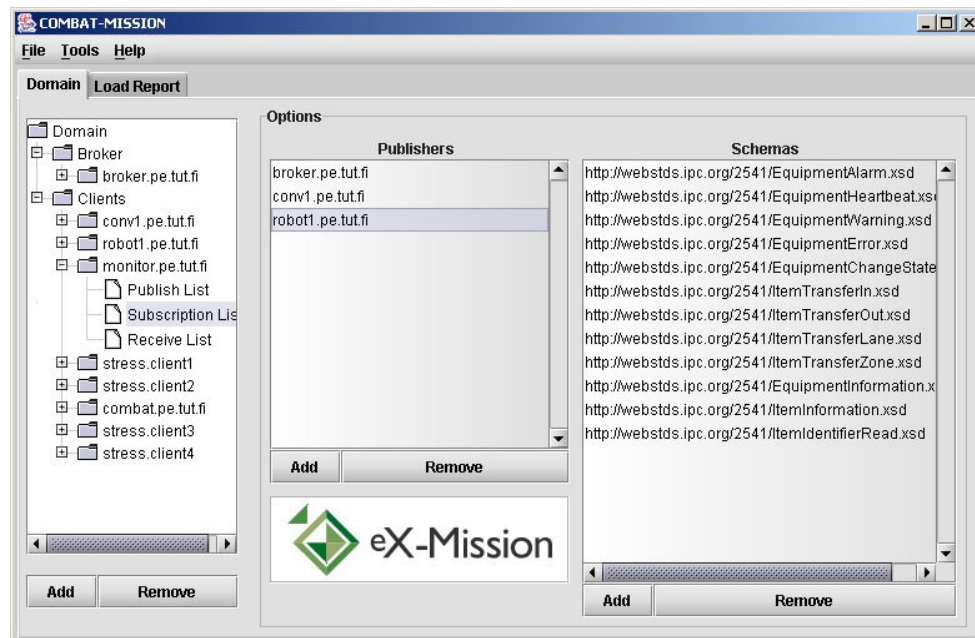


Figure 1. Browsing the Domain Configuration with COMBAT-MISSION

Notes:

2 Features

2.1 Domain Configuration

Within the “Domain” tab of the main screen, you may edit and dynamically update the Domain Configuration serviced by your BRAVE server. For further information on Domain Configuration, please review the IPC-2501 specification.

2.1.1 Adding and Removing Clients

Use the tree on the left side of the screen to navigate through the Domain Entities. You may use the “Add” and “Remove” buttons to add and remove clients from the domain.

When removing a client from the domain, all subscriber’s lists are automatically updated.

Note: When adding and removing clients from the Domain Configuration, make sure not to remove the COMBAT client. The BRAVE server will refuse all connections to COMBAT and you will not be able to undo your changes !!

2.1.2 Modifying a Publish List

Navigate through the domain tree to the desired client. Expand the client node to show available features, and select “Publish List”.

2.1.2.1 Adding a Message Schema

Once the client’s Publish List is displayed, click on the “Add” button below the “Schemas” pane on the right side of the screen. A pop-up window will appear where you can specify the message schema to add. Click “Ok” when finished.

Use the predefined message schemas for fast and reliable configuration.

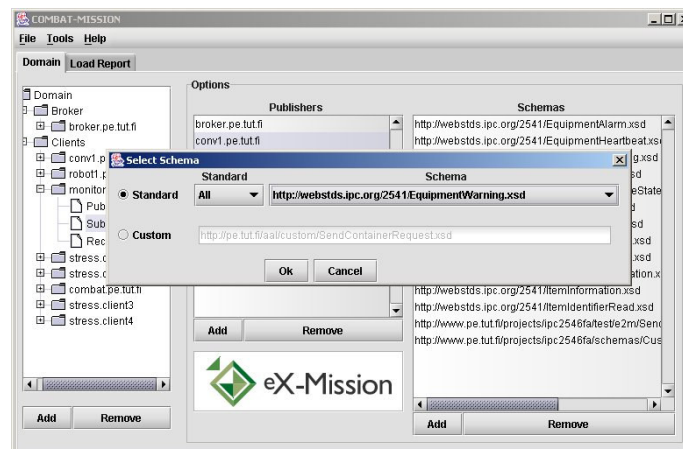


Figure 2. Message Schema Selection Dialog

2.1.2.2 Removing a Message Schema

Once the client's Publish List is displayed, select the message schema in the "Schemas" pane, and click on the "Remove" button. A confirmation pop-up window will appear, click "Ok".

2.1.3 Modifying a Subscription List

Navigate through the domain tree to the desired subscribing client. Expand the client node to show available features, and select "Subscription List".

2.1.3.1 Adding a Publisher of Interest

Click on the "Add" button below the "Publishers" pane. Select a publisher from the pop-up window, and click "Ok".

2.1.3.2 Removing a Publisher from the Subscription List

Select the client in the "Publishers" pane, and click on the "Remove" button. A confirmation pop-up window will appear, click "Ok".

2.1.3.3 Adding a Message Schema Subscription

Select the publisher of interest in the "Publishers" pane. Click on the "Add" button below the "Schemas" pane on the right side of the screen. A pop-up window will appear where you can specify the message schema to add. Click "Ok" when finished.

2.1.3.4 Removing a Message Schema Subscription

Select the publisher of interest in the "Publishers" pane. Select the message schema in the "Schemas" pane, and click on the "Remove" button. A confirmation pop-up window will appear, click "Ok".

2.1.4 Modifying a Receive List

Navigate through the domain tree to the desired receiving client. Expand the client node to show available features, and select "Receive List". Sending clients and message schemas are added and removed in the same way as when editing the Publish List (see "3.1.3 Modifying a Publish List").

Receive Lists are modified as easily as Publish Lists.

2.1.5 Committing Changes

Changes made to the Domain Configuration will not be made effective in the BRAVE server until they are committed. Select "Commit Changes" from the "Tools" menu to commit the changes.

Select "Discard Changes" from the "Tools" menu to discard the changes made and refresh to the current Domain Configuration in the BRAVE server.

You may export the current Domain Configuration to an XML file by selecting "Export" from the "Files" Menu.

2.2 Monitoring

COMBAT periodically collects statistics from the BRAVE server, and displays them in the “Load Report” tab of the main screen.

2.2.1 Adding a Client to the Report List

To view statistical information for a specific client in the domain, select the client from the “Domain Entities” list, and click the “Add” button.

You may add multiple clients at the same time using the “Ctrl” and “Shift” keys.

2.2.2 Removing a Client from the Report List

To stop viewing statistical information for a specific client, select the client from the “Domain Entities” list, and click the “Remove” button.

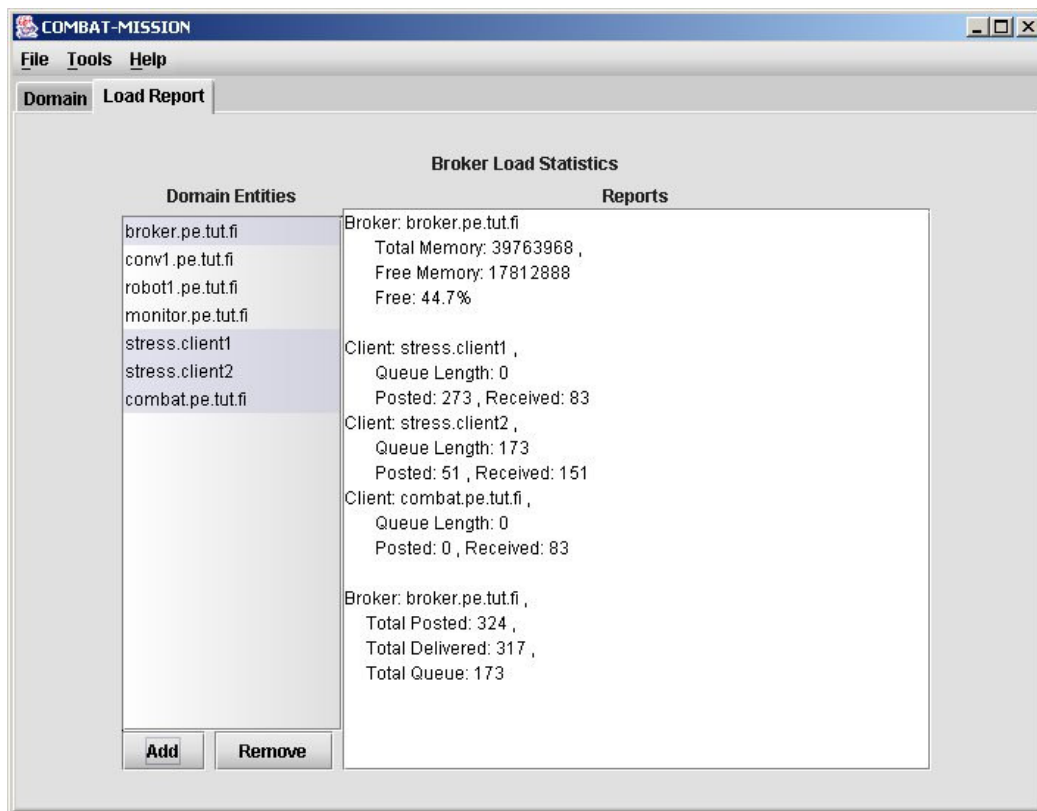


Figure 3. Sample Report

Notes:

3 Configuration

Configuration of COMBAT is simple and straightforward. Simply edit the `combat.ini` configuration file and set the following parameters:

- `clientName`: the Domain URI for the COMBAT client
- `brokerName`: the URI for the Message Broker
- `brokerURL`: the URL for the BRAVE server
- `refreshInterval`: the refresh period in seconds for collecting statistics from the BRAVE server

The `combat.ini` file must be located in the same directory as `combat.exe`.

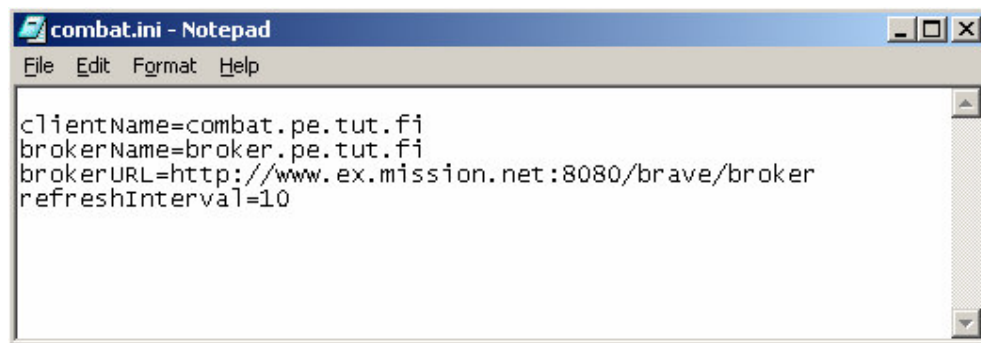


Figure 4 `combat.ini` configuration file example

COMBAT-MISSION is now ready to use !!

Notes: