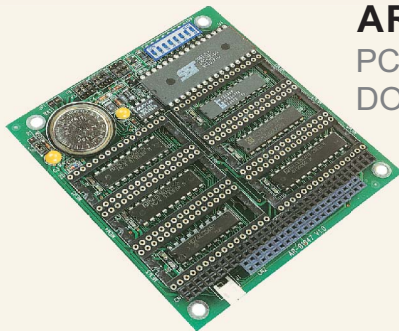


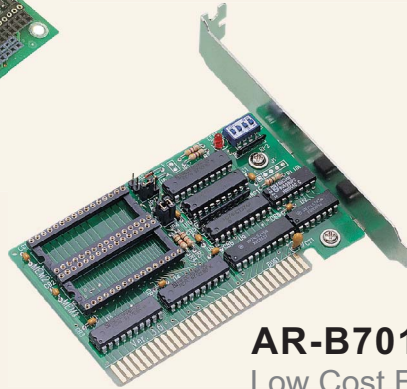
# AR-B1047

## AR-B7041 · AR-B7010

Solid State Disk



**AR-B1047**  
PC/104 Solid State Disk &  
DOC Card



**AR-B7010**  
Low Cost EPROM Disk Card



**AR-B7041**  
8MB Flash EPROM/RAM/ROM  
Disk Card

### AR-B1047

<b>General:</b>	
Memory Sockets	Six 32-pin JEDEC sockets for SSD, one socket for DiskOnChip
Disk Capacity	6MB Maximum
EPROM Type	27C010(128KX8), 27C020(256KX8), 27C040(512 KX8), and 27C080(1MX8)
Flash Type	Form 64KX8 to 512KX8 Flash Chips (Configurations Below)28EExx, 28Fxxx, 28SFxxx, 29Cxxx, 29EExxx, 29Fxxx and M-Systems' DiskOnChip
Disk Drive	Simulates 1 or 2 Floppy Disk Drives
Battery	Onboard 400mAH Lithium for SRAM data retention
Occupied Memory	Occupies only 16K bytes of memory space (maximum)
Flash Programming	5V/12V Flash Programming Circuit Provided
Power Consumption	+5V only, 0.5A maximum
Dimension	90mm x 96mm ( 3.5 " x 3.8 ")

#### Packing List:

Part No.	SSD Utility
----------	-------------

#### Ordering Information:

AR-B1047	PC/104 Solid State Disk & DOC Card
----------	------------------------------------

### AR-B7010

<b>General:</b>	
EPROM accepted	27C010, 27C020, 27C040 and 27C080
Power consumption	+5VDC@100mA maximum (without EPROMs)
Operating temperature	0~60°C(32~140°F)
Applications	1. Diskless PC workstation 2. High reliability and / or high speed access applications 3. Heavy duty disk access requirements 4. PC controller for industrial or line test instruments 5. Network workstation
Dimension	105 mm x 65 mm

#### Packing List:

Part No.	SSD Utility	AR-B7010	Low Cost EPROM Disk Card
----------	-------------	----------	--------------------------

#### Ordering Information:

### AR-B7041

Fully compatible with standard floppy disk drive. Eight 32 pin JEDEC standard sockets	
Maximum capacity	8 MB Bytes
Accepts EPROM	27C010(128 x 8), 27C020(256 x 8), 27C040 (512 x 8), 27C080(1M x 8)
Accepts Flash	5V/12V Flash, such as 29C/29F/28EE/29EE/ 28SF/28F memory A software programmable watchdog keeps the system from hanging 4 I/O addresses selected by switches and occupy only 4 address 4 memory addresses selected by switch only occupy 16K bytes of memory space
Accepts SRAM	584000(512 x 8) or 581000 (128 x 8)
Disk Drive emulation	System is able to emulate up to two drives in a combination of 8 sequences

Using A, B, C and D drives (Example :A&B, A&D, D&C etc.) Hardware write protection function and SRAM/Flash supported 600mAH, lithium battery provided for SRAM backup Connector external battery provided

Flash programming	Onboard 5V, 12V Flash program circuits and software utility
Power Consumption	+5VDC, 0.5A maximum
SRAM data retention	2uA for every Sony CXK581000P-10L SRAM
LCD Indicator	Watchdog LED and in use LED indicators
Operating Temperature	0~60°C(32~140°F)
Dimension	175 mm x 114.3mm
Weight	170g (without EPROM, SRAM or Flash Chips)

#### Packing List:

Part No.	SSD Utility
----------	-------------

#### Ordering Information:

AR-B7041	8MB Flash EPROM/RAM/ROM Disk Card
Optional	IC-27C010: 128KB EPROM Chip IC-27C020: 256KB EPROM Chip IC-27C040: 512KB EPROM Chip IC-27C080: 1MB EPROM Chip IC-581000: 128KB SRAM Chip IC-584000: 512KB SPRAM Chip 5V/12V Flash EPROM: 28SFxxx/28Fxxx/28EExxx 29EExxx/29Fxxx/29Cxxx

Specifications are subject to change without notice.